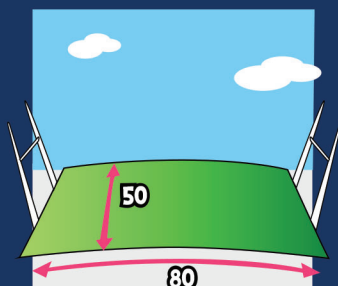


U11 Mini Rugby Laws



Pitch Size



Ball Size



Number of Players



Substitutes

ALL substitutes should play



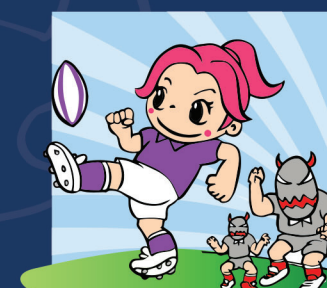
Boots



Mouthguard



Playing time



Kick in open play

Only within 15m of own try line



Hand off

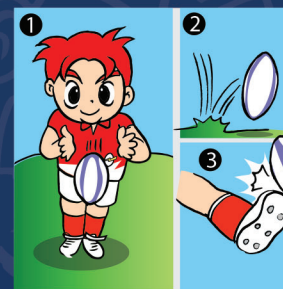
Flat palm, bent elbow, below shoulder



Advantage



Try



Kick-off

Defensive team back 7m



Tackle



Ruck



Ruck offside & onside



Maul



Line out

4 players per team
Defensive team back 7m



Scrum

No push, Hookers and second row
may contest, props must stand on two feet



Penalty

Defensive team back 7m



Fair Play